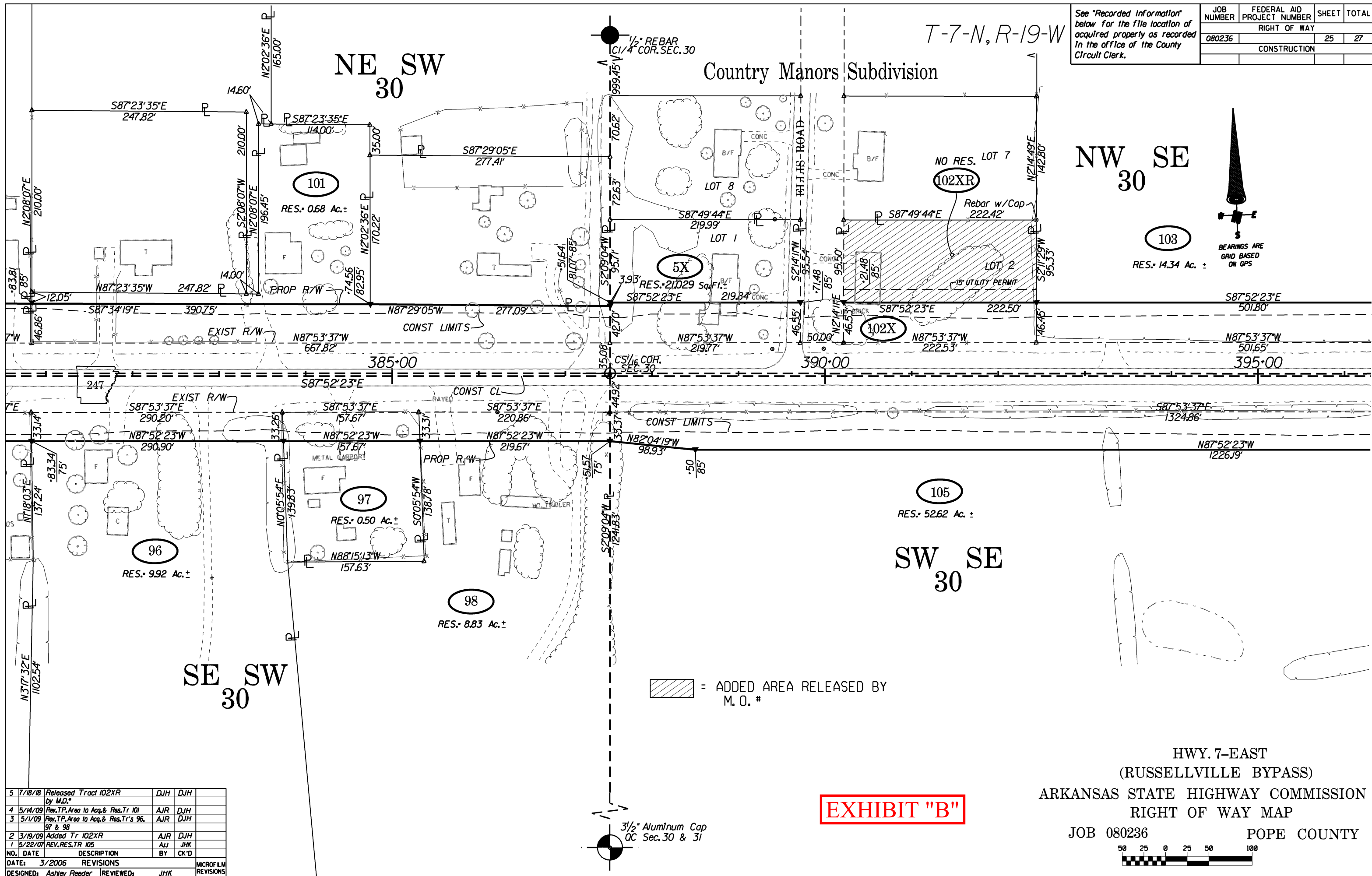
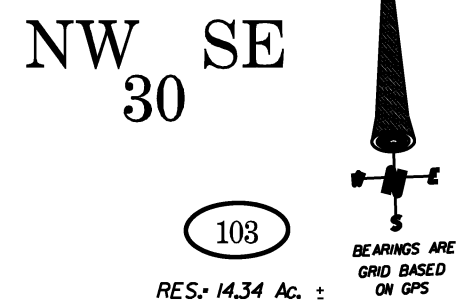


| | | | |
|--------------|----------------------------|-------|-------|
| JOB NUMBER | FEDERAL AID PROJECT NUMBER | SHEET | TOTAL |
| 080236 | | 25 | 27 |
| RIGHT OF WAY | | | |
| CONSTRUCTION | | | |



| | | | | | |
|-------------------------|---------|---|-----|------|---------------------|
| 5 | 7/18/18 | Released Tract 102XR by M.O.# | DJH | DJH | |
| 4 | 5/14/09 | Rev.TP.Area to Acq.& Res.Tr 101 | AJR | DJH | |
| 3 | 5/1/09 | Rev.TP.Area to Acq.& Res.Tr's 96, 97 & 98 | AJR | DJH | |
| 2 | 3/19/09 | Added Tr 102XR | AJR | DJH | |
| 1 | 5/22/07 | REV.RES.TR 105 | AJ | JHK | |
| NO. | DATE | DESCRIPTION | BY | CK'D | |
| DATE: 3/2006 | | REVISIONS | | | MICROFILM REVISIONS |
| DESIGNED: Ashley Reeder | | REVIEWED: JHK | | | |

EXHIBIT "B"

HWY. 7-EAST
(RUSSELLVILLE BYPASS)
ARKANSAS STATE HIGHWAY COMMISSION
RIGHT OF WAY MAP
JOB 080236 POPE COUNTY

